

AUXILIARY SWITCH, 1 NC CONTACT, 1 NO CONTACT, CONNECTION AUXILIARY CIRCUIT: SCREW TERMINAL,



General technical data:		
product brandname		SIRIUS
Product designation		auxiliary switch compact feeder
Protection class IP		IP20
Relative humidity during operation	%	10 ... 90
Ambient temperature		
• during transport	°C	-55 ... +80
• during storage	°C	-55 ... +80
• during operation	°C	-20 ... +60
Equipment marking acc. to DIN EN 61346-2		K
Equipment marking acc. to DIN 40719 extended according to IEC 204-2 acc. to IEC 750		K







Auxiliary circuit:		
Number of NC contacts for auxiliary contacts		1
Number of NO contacts for auxiliary contacts		1

Installation/ mounting/ dimensions:		
Width	mm	45
Height	mm	32

Depth	mm	25
Connections/ Terminals:		
Wire stripping length	mm	10
Type of electrical connection		screw-type terminals
• for auxiliary and control current circuit		
Design of screw-type connection for auxiliary contacts		M6
Tightening torque for auxiliary contacts with screw-type terminals	N·m	0.8 ... 1.2
Type of connectable conductor cross-sections for auxiliary contacts		max. 2x (1 ... 4 mm ²)
• solid		
• finely stranded		
— with core end processing		2x (0.5 ... 1.5 mm ²), 2x (0.75 ... 2.5 mm ²)
Type of connectable conductor cross-sections at AWG conductors for auxiliary contacts		2x (20 ... 16), 2x (18 ... 14), 1x 12

Certificates/ approvals:

Certificate of suitability	IEC / EN 60947-6-2
----------------------------	--------------------

General Product Approval	EMC	Functional Safety/Safety of Machinery	Declaration of Conformity
 CCC	 C-Tick	 VDE	 EG-Konf.
 CSA	 EAC		

Shipping Approval	other
 BUREAU VERITAS	Environmental Confirmations
 DNV	
 PRS	
 RINA	
 RMRS	

other
Confirmation

Further information

Information- and Downloadcenter (Catalogs, Brochures,...)

<http://www.siemens.com/industrial-controls/catalogs>

Industry Mall (Online ordering system)

<http://www.siemens.com/industrymall>

Cax online generator

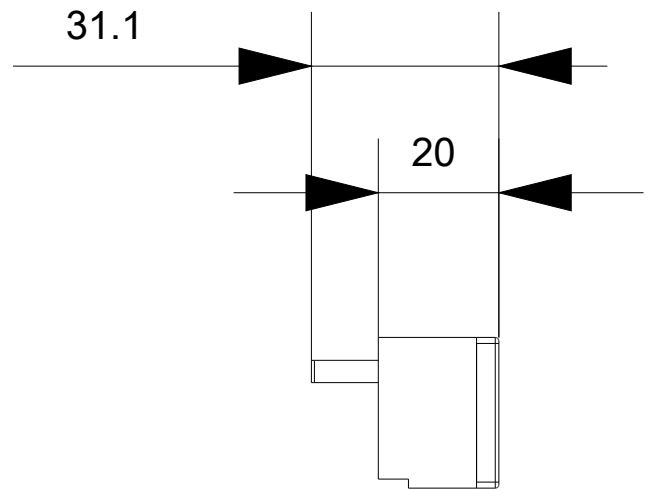
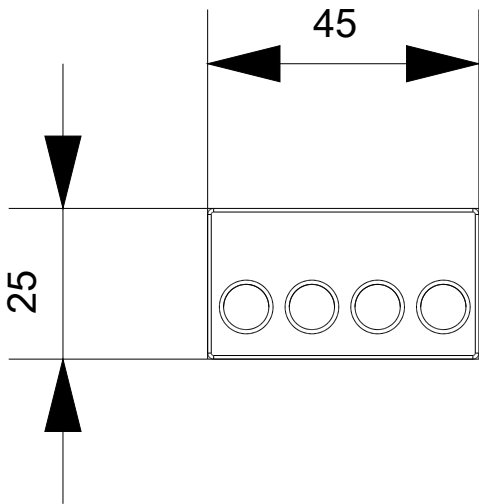
<http://support.automation.siemens.com/WW/CAXorder/default.aspx?lang=en&mlfb=3RA6913-1A>

Service&Support (Manuals, Certificates, Characteristics, FAQs,...)

<https://support.industry.siemens.com/cs/ww/en/ps/3RA6913-1A>

Image database (product images, 2D dimension drawings, 3D models, device circuit diagrams, EPLAN macros, ...)

http://www.automation.siemens.com/bilddb/cax_de.aspx?mlfb=3RA6913-1A&lang=en



last modified:

06/20/2017